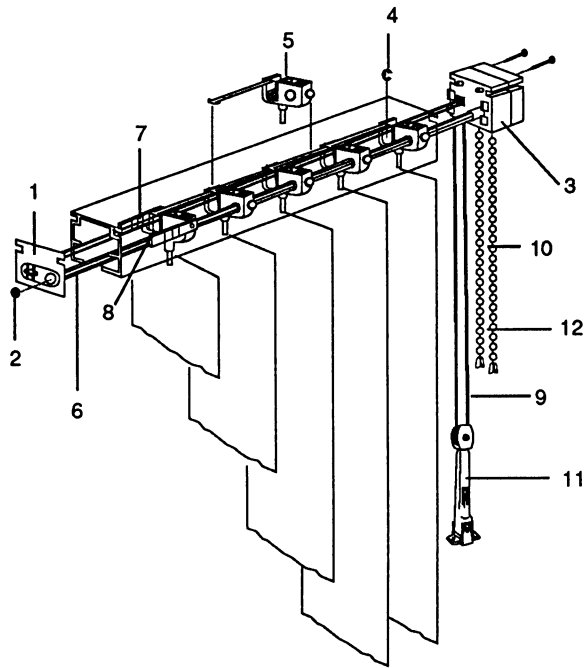
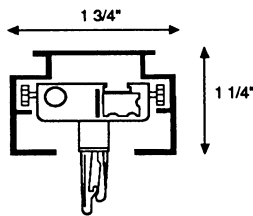


# S-1500

The Speedy Interior S-1500 heavy duty vertical track system provides smooth traversing and rotating functions for commercial installations where an economical and heavy duty system is required. This system is engineered to provide years of reliable service and features an independent self-aligning clutch mechanism in each louver carrier.



- |                      |                              |
|----------------------|------------------------------|
| 1. Idle End          | 8. Rod Support Dummy Carrier |
| 2. Push On Nut       | 9. Cord #3                   |
| 3. Control End       | 10. #10 Steel Chain          |
| 4. "C" Clip, 4 Prong | 11. Tension Pulley           |
| 5. Carrier           | 12. Tassel                   |
| 6. Pinion Rod        |                              |
| 7. Cord Drive Runner |                              |



One half scale cutaway view of carrier truck

### MAXIMUM SIZE RECOMMENDATIONS:

Maximum width: 192"  
Maximum drop: 120"  
Louver width: 3 1/2"

**WARRANTY:** Speedy Interior carries a 10 year limited repair or replacement warranty against defects in materials or workmanship.

### SPECIFICATIONS:

**GENERAL:** S-1500 self-aligning, traversing and rotating headrail system is manufactured by Speedy Interior, 3562 Eastham Drive, Culver CA 90230

**STACK:** Available in one way draw (left or right) or center opening.

**TRAVERSING:** Vertical blinds shall traverse left to right, right to left, or center opening. Blind shall traverse by means of a synthetic traverse cord.

**WHEELS:** Each louver carrier shall traverse on self-lubricating wheels to reduce draw force. No glides or sliders shall be allowed.

**ROTATION:** A #10 nickel plated steel bead chain loop provides 180 degree rotation to each vane stem simultaneously through a gear system in the control housing by turning a 4 prong extruded aluminum pinion rod actuating a plastic worm and spur gear assembly in each vane carrier. System shall keep louvers fixed until reset by controls.

**CHANNEL:** Headrail channel shall be of anodized aluminum alloy 1 3/4" wide by 1 1/4" high with .035 inch minimum wall thickness. The headrail will extend the width of the blind. The channel is available in anodized finish and baked enamel ivory and white. Other colors are available upon request.

**END CONTROLS:** Each headrail channel shall be equipped with end control housings made of high quality plastic. End controls shall be covered to enclose sprockets and rotation rod ends. End controls shall have rollers for traverse cord to allow extended cord life and ease of operation.

**CARRIERS:** Each carrier is made of high quality plastic made by Dupont or equivalent. It features an independent self-aligning clutch mechanism in each louver carrier, allowing less friction for self alignment. The shaft walls of the carrier are made of reinforced plastic for strength. The vane stem is made of clear plastic. Louvers shall rotate 180 degrees by an 4 prong pinion rod. No cord or 1 to 1 ratio mechanism shall be allowed.

**SPACING:** Heavy duty self-lubricating plastic link system and adjustment clips shall provide visually uniform vane spacing and quiet operation of blind. Normal spacing is a minimum of 3/8" less than louver width.



### SPEEDY INTERIOR

1630 W. 132nd St., Unit B  
Gardena, CA 90249

Telephone (310) 768-0333  
Telephone (800) 677-5588  
Facsimile (310) 768-0363

Contractor's Lic. # 743930